

NOVEMBER MEETING

Monday night, November 9th, 8 pm. New Locale: Eames Theatre. Members entering from 2nd Avenue side, come through Office door, then up stairs to left. From Seattle Center side, upper level to main entrance of Science Exhibit. Thanks to Dr. Ray, the new space has much better lighting, more floor space and much more suitable for identification sessions. Because of many new members, Dr. Stuntz will repeat his chalk talk on general characteristics of mushrooms, together with slides. There will be much to interest old members too. Identification session to follow.

EXHIBIT REPORT

It's too early for a final run-down on the exhibit, but we have some preliminary figures of interest. Attendance was in excess of 2,000. Paid admissions grossed about \$680, book sales about \$390 and memberships \$130. We had 65 copies of McKenny, 13 of Smith, 2 each of Thomas and Pilat & Usak and 6 of Faubian in our bookstore to start with and ended with none. We also sold 4 personal copies for Margaret McKenny. New members total 28 to date.

Cost of the exhibit will come to about \$500, which includes the lumber, photographic supplies, lighting rental, table rental and miscellaneous. The exhibit construction will be left for the use of the Science Center. Our photos and posters will be installed in the Eames Theater for the time being, and may become the core of a traveling exhibit for schools.

Specimen-gathering crews brought in about two tons of mushrooms, duff and moss (best estimate of Abe Goo, who did the bulk of the clean-up work). From many fine specimens, we showed 187 different species, including many rare ones.

Kudos belong to many hard-working members for staging a wonderful show. We only have space to mention a few - - John Uitti for building the flats, mounting the photographs and setting up the bookshop, as well as taking care of financial matters; Dave Gardner for his fine black and white photos and printing; Charlie Volz for two trips to the hinterlands to bring back the ceramic mushrooms; Connie Wood for typing most of the specimen labels; Dr. Stuntz and Darryl Grund for rapid-fire and

(more)

non-stop identifications; Elsie Burkman and her fine crew who staffed the show; Dr. Ray and the Science Center Staff (particularly Gil the Guard) for unstinting support; Al Crosetti for fine organization of the collecting crews; Anne Mack for woodland floral arrangements; Harold Helterline and Roger Spurr for loan of slides; and many, many others who helped out to make our First Annual Mushroom Exhibit a Humdinger of a Show!

DRYING BOX

MUSHROOM DRYER

Exploiting the services of our Chief Mushroom Dryer designer, we proudly add a page of his work to this bulletin. This do-it-yourself device can be built from a single standard 3/8" sheet of plywood, a few sticks of wood, some hardware, and an uncertain amount of luck. We will attempt to have a pilot model of the contraption at our next meeting.

We are cautioned by the designer not to overload the dryer, since the process requires ample exposure to the circulating air currents. The mushrooms should be sliced into pieces not more than 1/4" thick; dense material should be sliced thinner. When you have determined that your mushrooms are suitably dried (our designer is silent on this little detail), they are to be immediately bottled, bagged or canned in airtight dry containers.

SLIDES

The Society is compiling a collection of 35mm color slides of fungi of all kinds to be used in lectures and identification work. Our recent experience at the mushroom show has assured us that we are indeed blessed by the fact that there are a number of competent photographers in our group. Please turn in any slides that you might deem suitable for this project, marking them with your name so that they can be returned to you after they have been copied.

LIBRARY

Having fondled the idea of starting a library of books for so many months, we are pleased to announce the donation by Mrs. R. U. Herzog of Snohomish of three volumes to give us a beginning. They are A. H. Smith's Edible & Poisonous Mushrooms of Southeastern Michigan, C. M. Christiansen's Common Edible & Poisonous Mushrooms, and Gussow & Odell's Mushrooms of Canada. While we are on the subject, other members who have books they have outgrown or can otherwise spare can find a home for them with the Society.

(more)

HOME OFFICE

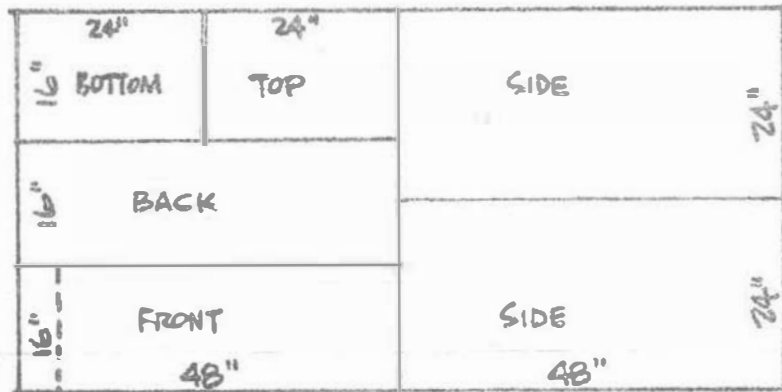
In keeping with it's new stature, the Society has rented office space at the Science Center, and will henceforth be reached by mail at 200 Second Avenue North, Seattle 98109. The rent is modest, and we will finally have a central place for the newly disentangled membership list, as well as repository for our library and photographic collection.

See you all at the Meeting,

Ben Woo, John Uitti, Charlie Volz,
Co-Editors in Chief...

PUGET SOUND MYCOLOGICAL SOCIETY

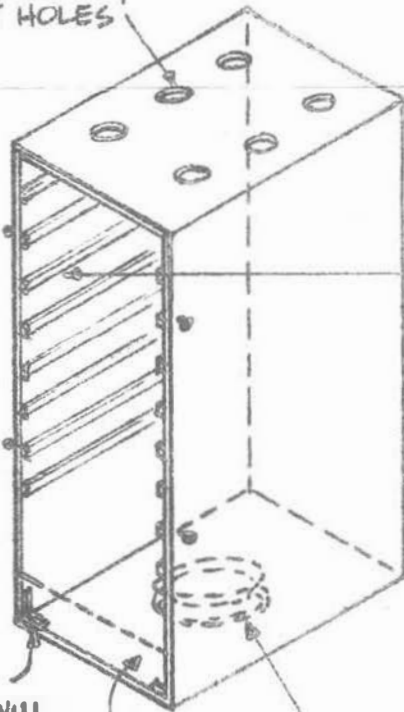
DESIGN FOR MUSHROOM DRYER



CUTTING DIAGRAM - 3/8" PLYWOOD - 4'x8'

YOU WILL ALSO NEED ABOUT 60' OF 3/4"x3/4" FIR, 32' OF 3/8"x3/4" AND ABOUT 8 FT OF 24" WIDE INSECT SCREENING. PLUS NAILS, STAPLES, GLUE OR WHATEVER..

DRILL 6-2"φ VENT HOLES



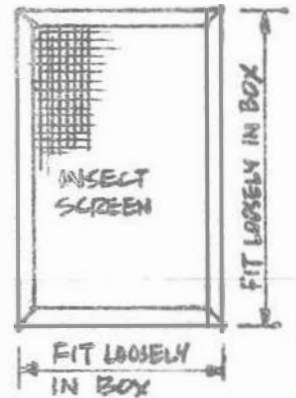
MENDING ANGLES WILL STIFFEN FRONT

LEAVE ABOUT 4" OPEN AT BOTTOM OF FRONT FOR AIR

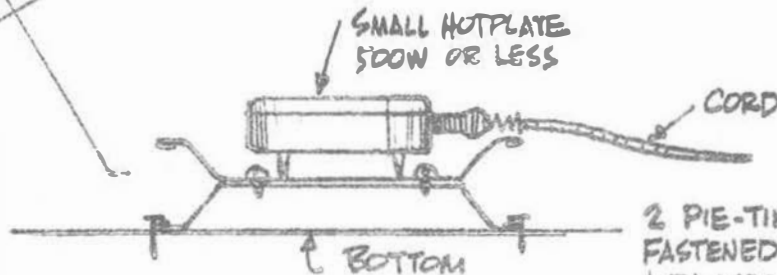
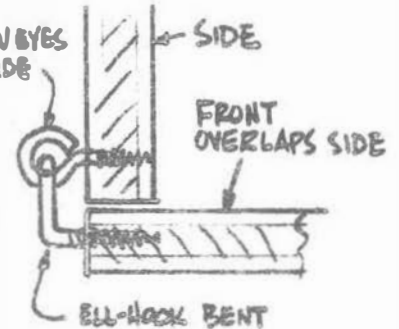
BUILD SHELVES WITH 3/4"x3/4" FRAME. CORNERS MAY BE MITERED WITH CORRUGATED FASTENERS OR BUTTED AND NAILED. STRETCH SCREENING TIGHT & TACK OR STAPLE THROUGH THEM.

SHELF GUIDES 3/8"x3/4" SPACED ABOUT 4", GLUE & NAIL.

FRONT MAY BE HINGED OR WE SUGGEST SIMPLE EYE & HOOK MOUNTING FOR EASY REMOVAL



2 SCREEN BYES EACH SIDE



2 PIE-TINS (8") FASTENED TOGETHER & TACKED TO BOTTOM WILL HOLD HOT PLATE.