

SPORE PRINTS

PUGET SOUND MYCOLOGICAL SOCIETY

200 Second Avenue North Seattle, Washington 98109

NOVEMBER, 1970

NUMBER 66



EXPERTS WILL ANSWER YOUR QUESTIONS AT NOVEMBER MEETING

Howard Melsen will lead off at the November 9th meet with a 15 minute discussion of the *Russula* and *Lactarius* genera, illustrated by color slides (Volunteers willing to give a 10-15 minute presentation on one or two genera at future meetings are urged to contact Milton Grout, Education Chairman, at SH. 7-0497. An extensive library of slides, cataloged by genus, is available).

The second part of the program will be turned over to give and take between a panel of PSMS experts and those of us in the audience. Prepare your mycological queries for Paul Nestell, George Rafanelli, Charles Volz and Ben Woo. Genial Ralph Nolan will serve as moderator. Specimens you have gathered will be identified and shown at the popular display tables. 8 p.m., Monday, Nov. 9, Eames Theatre, Seattle Center.

Your editor apologizes to those members who showed up at the right place on the wrong October day because one of the dates in the last bulletin was wrong. Some, recalling that general meetings are held the second Monday of each month except July and August, called to check out the discrepancy. The heavy attendance last month indicated that not too many members took the mistake seriously. The editor was shook by the kindly Everett caller who showed up at a locked hall. Sorry about that.

FIELD TRIP REPORTS

Dalles - Oct. 3-4 - Around 300 persons escaped from the week of stress, enjoyed themselves out in fungus land. An estimated 180 stayed for the fresh air potluck supper. *Sparassis*, *Herichium* and *A. ponderosa* were among the 260 identified specimens collected during the pleasant weather weekend.

Crystal Springs - Oct. 17-18 - The weather was fine on Saturday, a little rain on Sunday but it didn't dampen the spirits of the 150 mushroomers who attended. Dr. Stuntz and his helpers identified 140 species. About 100 hearty appetites were sated at the Saturday evening feast. In spite of the number attending there was no difficulty because the shelter was large and folks were able to eat outdoors.

President Ramsey and the Board also express their appreciation to Dr. Dixie Lee Ray and her entire staff at the Seattle Science Center. They left no stone unturned to see that everything possible was done for the exhibit. Again, PSMS is deeply grateful to be a part of this great organization and to have the opportunity to present our annual shows at the Center.

Another board action was good news for members. It was decided to continue the subsidy of the annual survival banquet, a reversal of a previous board decision. Tickets will be \$6 per person (drinks extra) rather than previously proposed \$7.50, with the Society picking up the tab for any additional expense. Belle Swaffield, banquet chairman, pointed out that the event is the annual meeting of the Society and that the price should be kept at a level which enabled as many members as possible to attend. Her motion to reverse the August motion passed on a roll call vote with only alternate Grout voting no.

The banquet has been scheduled for Saturday, March 13 at the Seattle Center. The hospitality hour will be held in the Nisqually Room and the buffet supper will be served in the Snoqualmie Room.

Belle reports that a double entree menu is being planned and that new and different ways to include mushrooms in every dish - even the dessert - are being dreamed up. Planning is underway for the program at the gala event. She extends a special thank you to the members who donated fresh picked and cleaned mushrooms for custom canning and consumption at the banquet.

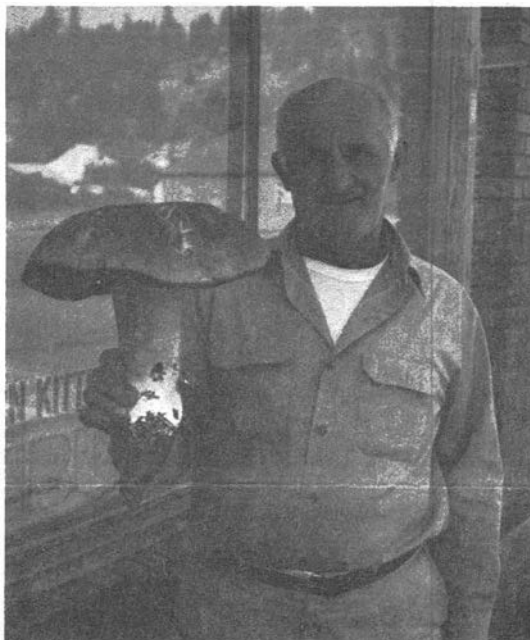
EXHIBIT FEATURED TWO NEW DISPLAYS

There were two innovations at the show this year and, because of the enthusiastic reception by the public, will no doubt become regular features.

BEGINNER'S TABLE - Many asked how it originated: It was the brain child of Peggy Fay, Easton. She attended the exhibit for the first time last year and was floored by the magnitude of the display. Incidentally, she is a knowledgeable mushroomer and identifies them for everyone for miles around. Her idea was to keep it simple and just show a few common species. Not realizing just how it would take hold, she felt she could handle it by herself and is making different plans for 1971. Several members jumped in and gave her a hand. Most of the time you couldn't see any of them because of the crowd.

PRESERVATION DISPLAY - Likewise this had been an idea of Hildah Nolan's for

MUSHROOMS ARE BIGGER IN THE FALL



Andy Chicklinsky was a bit late in entering the Pioneer Days mushroom contest, but chairman Pete Fassero verifies that it was weighed in at 4 lbs., 2 oz. (It weighed

5 lbs. before loosing some of its moisture content.)

Chicklinsky reports he found it "along the Yakima River".

-- Northern Kittitas County Tribune

a couple of years but this was the first time it had really taken hold and had support from other members. In the belief that the display might be intriguing (Note: The editor tried to shoplift a tasty looking jar of fungus but so tight was the crowd he couldn't raise his arm to snatch the prize) 2000 canning pamphlets were procured from Kerr Mfg. Co. and an equal amount of instruction sheets were printed. All were gone before the show closed. Hildah will have more of her sheets at meetings or they can be secured by writing her and enclosing a stamped, self addressed envelope. The display was manned by some of the mighty fine workers at the show: Pauline Shiosaki, our cookbook editor, Barbara Lansinger, Barbara Regeth, Ethel Bennett, Tak Imori; Jennie Schmitt and Carol Nestell when they were not working elsewhere. Hours will be shorter next year for the continual talk effort.



CORRESPONDENCE - Harry Knighton, president of The North American Mycological Association (that's NAMA's insignia on the left), writes: "Your readers might be interested in the results of our foray at the U. of Minnesota Biological Station at Lake Itasca, The summer was the driest in 30 years but much of the area had received more than two inches of rain on the preceding weekend. Considering conditions, we did remarkably well and expect to report about 200 species to the membership.

We were fortunate in having four well known mycologists for the Sept. 25-27 foray. Agarics were handled by Dr. R.L. Shaffer, U. of Michigan, who also served as the principal mycologist. Ascospores were under Dr. C.W. Ellett, Ohio State, Polypores under Dr. W.B. Cooke, U.S.D.A., and Hydnum under Dr. K.A. Harrison, U. of Michigan. We held a rotating seminar under each of these leaders in which the foray participants were divided into groups of about 20 each, rotating every half hour for a lecture and demonstration in each grouping. A complete report will appear in the next Mycophile."

Begun as the Fungi Committee, a part of the People-to-People program initiated by the late Dwight Eisenhower, NAMA adopted its current name in 1967. The Association is organized into 12 regions encompassing the U.S., Canada and Mexico. Major areas of activity involve collecting forays, identification with new publications and faster keys, photography and publication of the Mycophile with news of the latest publications, activities and discoveries in the "World at Your Feet." Dues are \$2.50 per persons, \$6 for a family membership (3 or more) and students, \$1. An informational brochure may be obtained by writing NAMA, 4245 Redinger Road, Portsmouth, Ohio 45662.

Leo and Kate Lovgreen, Shelton, sent along a fine photo clip of the editor's favorite, a *Sparassis radicata*. Thanks, we hope to use it next time. Let's hear from the rest of you out in Fungus Heaven. Send your articles, cartoons, comments, etc. to Lyle Mercer, 747 21st E., Seattle 98102.

IF YOU DIDN'T MAKE THE OCTOBER MEETING...

...you missed an informative and humorous talk by George Rafanelli. His truck load of props included shovels, axes, a machete, a variety of sacks and head gear and a bottle of vino ("You can find more mushrooms on red wine than you can on white.") Among other places, he suggested looking for fungus in parks, golf courses, cemeteries, pastures, power line right of ways, parking strips, taking trail bikes down railroad tracks or up logging roads. Noting that the Nez Perce tribe and the Vikings ate mushrooms to encourage aggression, he concluded: "If you want to make war and not love, eat Amanitas."

DO MAIL THAT CHECK FOR YOUR ANNUAL DUES TODAY

PSMS membership runs from January 1 to December 31. However, instead of having a peak load and our overworked volunteers running to and fro at the last minute, send your membership renewal now while it's on your mind to the Society, 200 2nd N., Seattle 98109. \$5 per family, \$2.50 for students. A note of appreciation to those who renewed at the exhibit. The book work on more than 700 members is a big chore. With no paid staff, the work falls on your fellow members. Make it easier for them, sign up today!

HIGHLIGHTS OF OCTOBER 26 BOARD MEETING

Present at the 8 p.m. meeting were Robert Ramsey, president; Freda Paice, secretary; Fred Wasson, treasurer; Fay and Howard Melsen, Victor and Dorothy Nendza, Georgia Ramsey, Ann Bard and Belle Swaffield. Alternates voting for absent Paul Nestell and Ben Woo were Milton Grout and Estelle Hansen. Alternate Martin Hansen was also present.

The following report was given on the Seventh Annual Exhibit (arts and crafts figures not available at press time):

<u>Attendance</u>	<u>Number Paid</u>	<u>Passes(PSMS, Science Center)</u>	<u>Total</u>
Sunday	2,784	1,484	4,268
Sunday	3,296	2,027	<u>5,323</u>
		Grand Total	9,591

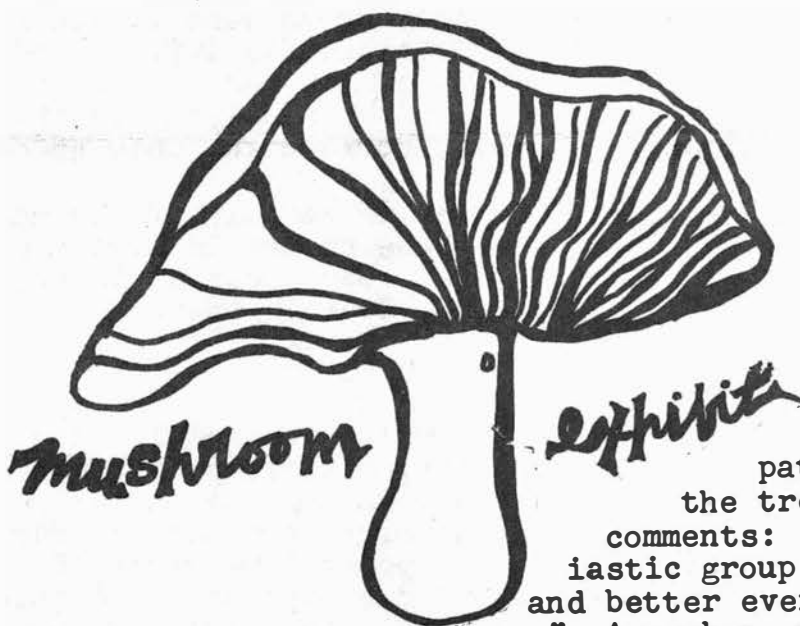
Income: Saturday \$3,647.75 Sunday \$4,343.65 Total: \$7,991.40

Memberships: New - 174 Renewals - 27 Total: 201

It was agreed that the crowds at times were overwhelming and arrangements will be made to relieve the pressure next year.

NOTES ON A FANTASTIC EXHIBIT

Vic Nendza, our Exhibit Chairman did an outstanding job. His able subcommittee chairmen and admirable teamwork brought off another enthusiastic, successful show. It would be impossible to pick out everyone who helped but a heartfelt "Thank you" goes to all who worked so long, patiently and tirelessly to put the tremendous endeavour on.



1970

comments: "I never saw such an enthusiastic group of people. It gets bigger and better every year. It overawes and stuns one." A member, working at his first show remarked that he was proud to be a member of the Society and it is generally agreed that the majority feel this way. Again, the Board and the membership thank you, Vic, for a job well done.