

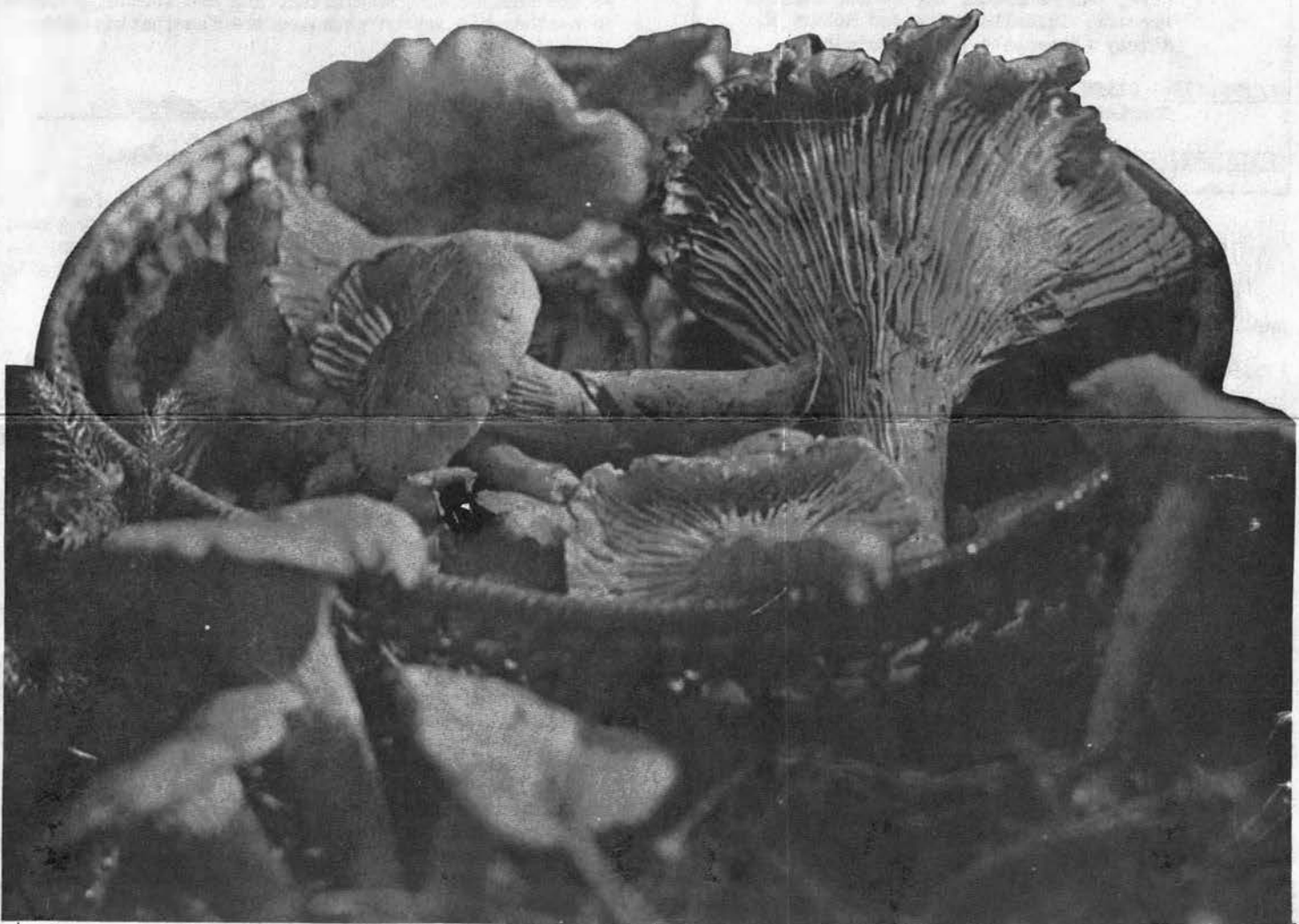
SPORE PRINTS

BULLETIN OF THE PUGET SOUND MYCOLOGICAL SOCIETY
200 Second Avenue North Seattle, Wa 98109
September 1972 Number 84

membership meeting

Monday, September 11, 8pm, Eames Theatre, Pacific
Science Center.

Our own Dear Dr. Stuntz has prepared a secret lecture
on the fall mushrooms. Because it is a secret lecture,
it is impossible to disclose exactly what it will be
about. Don't miss this.





SPORE PRINTS is published monthly except July and August by the PUGET SOUND MYCOLOGICAL SOCIETY, c/o The Pacific Science Center, 200 - 2nd Ave N, Seattle, Washington 98109.

OFFICERS, NEWLY ELECTED

Howard Melsen	President
Charles Woodruff	Vice Pres
Helen Wasson	Treasurer
Helen Hewitt	Secretary

TRUSTEES Michel Allain, Scott Chilton, Dina Chybinski, Claude Dilly, Milton Grout, James M. Hara, Don Peterson, Dee Poole, Charles Proctor, Isabelle Waite and Robert W. Ramsey (Immediate Past President)

ALTERNATES: Cliff Carpenter, Virginia Kessner, Charles Kessner.

SCIENTIFIC ADVISOR Dr. Daniel E. Stuntz

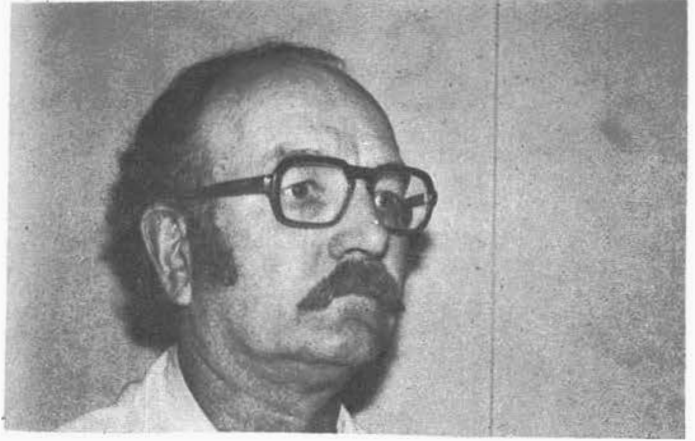
C A L E N D A R

- Sept. 11 Monday 6:30 Arts & Crafts Comm. in Board Rm
8:00 pm Membership meeting
(There will be NO Planning Committee meeting Sept.11)
- Sept. 18 Monday 8:00 pm Board meeting
- Sept. 22 Deadline for Sporeprints news. Mail to SP,
4029 E. Madison, Seattle WA 98102.
- Oct. 9 Monday 8:00 pm Membership meeting
- Oct. 14/15 Sat. and Sun. noon to 9pm Annual Exhibit
- Nov. 9 Thursday 6:45 Planning committee
- March 31 Annual Survivors' Banquet

IT'S ABOUT TIME DEPT.

It's about time to give credit to Sara Nephew, the talented artist "SAN" who has been kind enough to let us use some of her drawings in Spore Prints. She had a B.A. in Art from Alverno College, Milwaukee, Wis., and has exhibited her jewelry and enameling nationally, as well as locally at the Bellevue Fair.

Thank you, Sara.



PRESIDENT'S MESSAGE

The favorite time of the year for us is just beginning. Once more we must put out the warning to be absolutely sure of any mushroom you eat. Every year we read of someone not heeding these warnings and being rushed to the hospital. Don't underestimate the potency of some of our mushrooms; inshort, don't take chances!

Our Exhibit Committee is busy making preparations for the big show next month. The schedule of field trips includes some entirely new areas for us to check out.

We are anxious to get started, and are looking forward to another big season pursuing the fascinating hobby.

READ ALL ABOUT IT - BOARD ANNOUNCES CONTEST

August 21st. Seventeen peoples were present.

A contest was announced. Designs are sought for PSMS shoulder patches and/or pins. Start drawing now, and submit your favorites to PSMS, 200 Seco.l Ave. N., Seattle, Wa. 98109. The deadline for submissions will be in November.

Bob Ramsey is engaged in a study of Amanita, so please save him a sample of each variety you find. He doesn't want hundreds of pounds, just good, one piece examples to study.

Scott Chilton and Bob Ramsey, members of the Committee on Mushroom Poisoning would like the following: "Any member who hears of a suspected mushroom poisoning case should immediately find out such details as are available and convey this information to one of the committee members. They are Scott Chilton, chairman; Dr. Robert Benedict, Dr. Daniel Stuntz, Dr. Lester Mittelstaedt, and Robert W. Ramsey. The Committee is searching for clinical data to support their work."

A further report on this difficult and ambitious project will appear later this fall.

The Washington Environmental Council was voted a \$200 donation. As our Revered Connie Calvert used to say, "Mushrooms need environment even as you and I, so we encourage WEC in their work." Charles Woodruff, our representative to WEC, may still have some tickets to the Snoqualmie Fall Forest Theatre Auction, which is a joint effort of WEC and several other environmental groups. Buy.

FIELD TRIPS

by Martin Hansen

Sept. 16/17 Silver Fir Forest Camp. Mt. Baker Hiway, 14 miles east of Glacier near Bellingham. Field trip committee: Martin and Estella Hansen, Bernie and Belle Swaffield, Howard and Fay Melsen, Ella and Ed Cantelon will lead.

Sept. 23/24 Soda Springs Forest Camp. Bumping Lake Road 174, 5 miles south of American River Resort. Bob and Georgia Ramsey, Jim and Ethel Bennett will fight over leadership.

Sept. 30/
Oct. 1 Crystal Springs Forest Camp. Yakima River, 21 miles N.W. of Cle Elum. Fred and Helen Wasson will lead. Assistanceships are open.

Oct. 7/8/9 Golden Ears Campsite in Golden Ears Provincial Park, Haney, B.C. This is on Alouette Lake, 30 miles east of Vancouver, B.C. Best to go through Sumas, then 7 miles north of Haney. Our hosts will be Dr. K. and Marjorie Asano and Dr. Bandoni. Bonus: The Dr. Bandoni will take us for a hunt through the U.B.C. Experimental Forest which joins Golden Ears Park. Golden Ears Park is a huge wooded area, so members will be able to scout around there also. The campsite has 212 separate spaces but there is no covered area.

Oct. 21/22/23 Dalles Forest Camp. Naches Highway 25 miles S.E. of Enumclaw. The Audubon Society will join us on this trip.

Oct. 28/29 Oak Patch Camp near Bremerton.

The above handsome selection of fall field trips needs only volunteer leaders and assistant leaders to make it complete. People who have never led before are most welcome. Step forward. Contact Martin Hansen or Ed Cantelon.



UNIVERSITY BEGINNERS CLASS

The University of Washington is offering a Continuing Education course on mushrooms. It will be taught by Dr. Stuntz. Anyone, any age, any education is welcome. Call the University for a copy of Spectrum, which includes mail-in registration forms, complete class information, and special campus events; the number is 543-2590.

IDENTIFYING MUSHROOMS OF THE PACIFIC NORTHWEST
Designed for persons with no special scientific training or background, this course will acquaint the student with the common mushrooms of the area. Fresh specimens will be studied on the basis of field identification with a minimum of microscopic analysis. The course also will include information about where and when to look for mushrooms, poisonous or edible properties, methods of preservation. Instructor: Daniel Stuntz, Professor of Botany.

REGISTER FOR BOT N24—Mondays, October 2—December 4 (second meeting—Wednesdays, October 11; seventh meeting—Wednesday November 15); 7:10-10 p.m.; 10 sessions; \$40; parking \$1.

PSMS BEGINNERS CLASS

Taught by Milt Grout

A comprehensive beginners course covering common genera and species within the genera, identification, collecting, preservation, and cookery. The class is limited to thirty persons. A tuition of \$5.00 per person will be charged to cover rental of the class room and educational materials. Attendance is limited to members. Those wishing to sign up for the class may do so at the September 11, 1972 meeting. Anyone wishing to attend, but unable to be at the meeting may call Milt Grout, SU 7-0497.

Time: 7:00 to 9:00 pm Monday evenings, Sept. 18 thru October 30, 1972.

Place: The Pacific Science Center Laboratory Class Room on ground level, opposite entrance to Eames Theatre. Bring specimens for discussion.

POSTER POSTERS NEEDED

Posters for our Annual Exhibit will be available at the September meeting. You poster pasters and pinners who would like to distribute these handsome examples of myco-art in your own area (a good way to get to know it better), call James Hara at LA 2-1019 or BA 6-4550. No experience is necessary; selections will be made on a geographical basis.

Cautionary note: These posters are relatively expensive and therefore do not go in the rumpus room or the office coffee corner. Only places where millions of people will see them are cricket.



SUPER MUSHROOM

On June 29th, Ilene and Francis Marckx were having a bite at a tiny cafe on the Canadian border, nobody else around, when in walked a man with a huge hunk of white mushroom for his friend, the proprietor.

The big hunk, it turned out, was only a fourth of the mushroom which weighed 54½ pounds. These Calvatia gigantea are fairly abundant in plowed fields down in the bottoms during certain season.

Ilene subsequently tried to find out the name of this super mushroom hunter for the Bulletin, but he couldn't be reached. She said he was a very nice man so we don't think he'll mind if we print her picture of him.

FIELD TRIP REPORTS

Silver Falls Camp - May 27-29

by Jennie and Dave Schmitt
Best Potluck Ever!! Dave and Jennie Schmitt, Joy and Lyle McKnight, Betty and Andy Yuhl were hosts for the weekend field trip.

We all turned out for morels, but the morels did not turn out for us. Visitors from the Twin Harbor Spore Addicts Mushroom Club found ten or more pounds, but PSMS did not do as well. Lots of *Gyromitra gigas* were found, and the first *Boletes* of the season were found there. We had 22 species identified; others went without a name.

150 plus signed in for the hunt; approximately 120 were on hand for the Potluck. Visitors from the Aberdeen-Hoquiam Club were Lucille and Victor Sanders, Glen and Dorothy Curtis, and Olive Parsons. I believe Mr. & Mrs. Alvin E. Herman, formerly of Olympia, Wa., now of Beaverton, Ore., travelled the farthest to attend.

Money Creek - June 3 by Al and Geneva Hutchison
Eighteen PSMS'rs turned out to round up 20 or so different mushrooms. Howard and Fay were on hand to identify most. They came up with one or two species for Dr. Stuntz to identify. Only two morels found.

The day was beautiful and the outing great with new members out for the 'hunt.' A few fishing poles were on hand, but the fish were as scarce as the morels. Pollard, Hansens, and Orths were on deck Friday evening and had everything set up for the rest of us who arrived on Saturday.

The mushrooms were few but the fellowship was great!

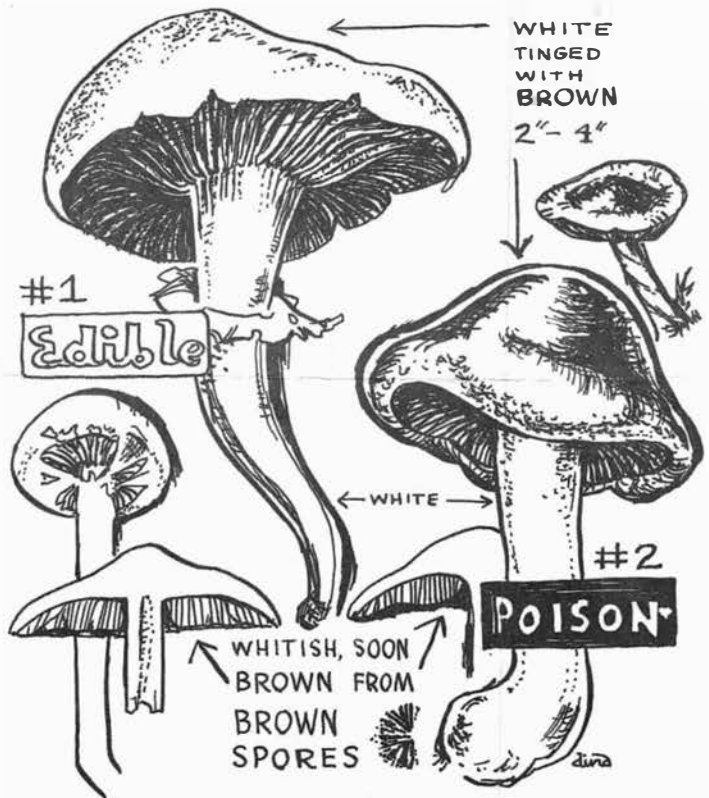
Clear Lake - June 17/18 by Dorothy and Ted Viers
The last spring field trip was a success for most of the approximately 90 people who signed the register. Some reported finding *B. edulis* in quantities right in camp, and others travelled in all directions to find them. Charlie Volz took time off from scrutinizing salmon to inspect and label 55 varieties of fungi on Saturday. There were some species fruiting that should have waited until fall, but didn't. Thanks again, Charlie. Hope your session on the salty brine this summer wasn't too rough.

Our immediate past president, Bob Ramsey, dropped in on Sunday to study some of the different species with his magnifying glass. We were also pleased to welcome some of our members from eastern Washington. As usual, the potluck dinner was superb, with 73 warm and active bodies sampling the gourmet cooking. We were very lucky, no community kitchen or shelter available, but no rain and lots of sunshine both days. Thanks to everyone who helped make this weekend a pleasant and smooth operation.

KITSAP PENINSULA MUSHROOM SHOW

The Kitsap Peninsula Mycological Society's Second Annual Mushroom Show will be held Sunday, October 8 from 1 to 8pm at the West Side Improvement Club, National Ave., Bremerton. Charges will be \$1.00 per adult, \$2.00 per family, and 50¢ for students. A fifth grade class from a local school will be displaying mushroom drawing, ceramics, and spore prints.

mystery mushroom



Tricky brown-spored look-alikes of similar size, the tasty, edible #1 and the notoriously poisonous #2 have these characteristics in common: White or creamy caps tinged with leather or crust brown, convex becoming flat with a small umbo, often downy at margin; pale, crowded, attached gills (but sinuate or emarginate) that soon become brown from the spores; white flesh; white stipe, as long or longer than cap width; both may form fairy rings. The early fruiting of edible #1, which was on view at our June meeting, probably explains its species epithet, but both may be found throughout the fall in mixed woods or pastures.

Luckily, the wary (and keen-nosed) pothunter can spot differences. Good edible #1 smells of meal, while dangerously poisonous #2 has the odor and flavor of radishes. Veiled in young specimens, benign #1 usually has an annulus on the stipe, which often tapers downward. It has a warm, cigar-brown spore print. Nasty #2 leaves a dingy, dirty-brown spore print. Its moderately thick stipe, of about equal diameter all the way down to an often bulbous base, has no ring. Its cap is definitely slimy-viscid with downy, incurved edges which may "weep" in youth or wet weather. In dry weather its cap may resemble puffed-up piecrust with egg-yolk glaze. Check out PSMS class key to learn their genera.

Answers: #1 *Agrocybe (formerly Pholiotia) praecox*. See Lange p.152, Hwass #130, Plat #96. #2 *Hebeloma crustuliniforme (Poison Plate)*. See McKenny/Stuntz p.128, Lange p.160, Hwass #136.