

# SPORE PRINTS

BULLETIN OF THE PUGET SOUND MYCOLOGICAL SOCIETY  
2559 NE 96th, Seattle, Washington, 98115



THINK SURVIVORS BANQUET

March 1982

Number 180

## ELECTIONS 1982

Howard Melsen

This issue of Spore Prints reaches you a little earlier than usual, because it is serving as our ELECTION NOTICE. Included you will find your official ballot(s) and return envelopes for your vote. Remember, a family membership entitles you to two votes, and a single membership to one vote.

Please return your marked ballot in the addressed envelope provided so that it is postmarked no later than March 6, 1982.

The election committee has presented to you a slate of excellent, capable and enthusiastic candidates. Their pictures and brief statements appear on pages 3 and 4 of this issue.

We urge all members to VOTE for the candidates of their choice and return the ballots postmarked no later than March 6th.

## FIELD TRIPS

At press time, the idea of "spring" and "mushrooms" still seemed a long time in the future. However, by tradition we have held a "learning" one-day only, field trip on the last Saturday in March. And we plan to do this again this year. Rain or shine, mushrooms or no mushrooms, this field trip, on Saturday, March 27, 1981 will be held.

For later field trips in the spring, which go to higher elevations, we have adopted the practice of putting a notice in the classified sections of the two Seattle newspapers, on Wednesday through Saturday of the week of the scheduled field trip in case our scouts had determined that we would either be too early or too late for the mushrooms we had anticipated finding in that location. We selected the TRAVEL sections, #825 in the Seattle Times, and #740 in the Seattle P.I.

March 28 - Saturday only - no potluck; bring your lunch  
MacDonald County Park = Tolt River Park.

This park is a half mile south of Carnation in King County. Enter via N.E. 40th Street from Highway #203 to get to the day use area of the park. Cross the suspension bridge to the shelter on the west side of the river.

Arrive by 9:00 AM since there will be a lecture by Monte Hendrickson on how to recognize the cottonwood trees under which the *Verpa bohemica* grow. After the lecture, Monte will lead the hunt.

Be sure to bring rain gear, a basket, and wear sturdy shoes. PSMS provides coffee and cookies.

April 3 and 4-Steelhead County Park in Rockport.

There are two possible routes, both lined with cottonwoods so you can even look for *Verpa bohemica* on the way. Either take the Arlington exit No. 208 from I-5 and drive through Darrington, OR take the Burlington exit No. 230 and continue on State Highway #20 to Rockport. Steelhead Park is on the river bank. There are some hook-ups and a fee is charged for camping. Monte and Hildegard Hendrickson are hosts for Saturday.

## SPRING EDUCATIONAL WORKSHOP

John Kunz

As announced last month, on Saturday and Sunday, March 13th and 14th, 1982, Kit Scates, a PSMS member from Idaho will hold an Educational Workshop in which the participants will be directed to learn to identify mushrooms to genus with the help of a pictorial key developed by Kit. Every participant will actively work in these sessions. That's the key to learning. The morning sessions will start at 10:00 and the afternoon ones at 1:00. Bring your lunch. PSMS will serve coffee and cookies.

Tickets for the workshop are \$15 per person or \$25 per couple. You may send in your reservation using the card mailed to you last month together with your check, or just a note with your check, to the Society's address at 2559 NE 96th St., Seattle, WA 98115. You also may register at the door. For additional information you may call 362-7402.

## MISCELLANEA

H.R.H.

THANK YOU JENNIE AND DAVE for obtaining the exquisite films on Mushroom Cultivation in Japan for our February Membership Meeting. They were a treat for our eyes and very informational. By the way, when you read this, Jennie and Dave (and several other PSMS members) are foraging for and learning about mushrooms at the Los Angeles Mycological Society's Annual Foray.

NEW MUSHROOM BOOKS - Recently two new books about mushrooms have come to our attention. The early bird might want to order them directly, since it might be a while before they will be available through our Society.

The Audubon Society Field Guide to North American Mushrooms, Knopf, 1981. Price \$12.50. 762 full-color identification photographs with text describing 703 species and notes on other fungi. Available in local book stores.

Mushrooms and Other Fungi of Great Britain and Europe, by Roger Phillips. 900 plus color illustrations (photos). Hard - \$17.50, Soft - \$14.50. ISBN 0-330-26441-9 post paid. Can be ordered from Lubrecht and Cramer, RFD 1, Box 227, Monticello, N.Y., 12701.

MYCOPHILATELY: The Peoples Republic of China has released six new mushroom stamps. The six are: Tremella fuciformis, Dictyophora induslata; Hericiium erinaceus; Russula rubra; Lentinus edodes; and Agaricus bisporus. The stamps are available from Bill Long, Star Route, Afton, Michigan, 49705.

OUR SYMPATHIES go to husband Terry and 3-week old baby. They mourn the death of Karen Ramborger, a PSMS member since 1978 and best friend of Marian Maxwell.

OUR GETTING WELL WISHES go to Dorothy Nendza who is recovering from cataract surgery on her second eye. Get well soon Dorothy, so can join us for the spring field trips.

WELCOME BACK FROM AUSTRALIA to George and Jennie Rafanelli. We hope that we will get a report about their trip. Although it was summer time down under and not many mushrooms were fruiting.



P. S. M. S.  
Spore  
Prints

is published monthly, except July and August, by the

PUGET SOUND MYCOLOGICAL SOCIETY

OUR NEW MAILING ADDRESS IS - 2559 N.E. 96th St. Seattle, Wa., 98115. Mail all material for Spore Prints to Hildegard Hendrickson, 2559 NE 96, Seattle, 98115.

OFFICERS Carl Hermanson, President, 1982 (1)  
John Kunz, Vice-President, 1983 (1)  
Earl Harrison, Treasurer, 1982 (2)  
Margaret Holzbauer, Secretary, 1983 (2)

TRUSTEES - Term expires March 1982: Margo Harrison (2); Rudy Karzmar (1); LomNee March (2); Stan March (1); Don Schultz (1)  
- Term expires March 1983: Hildegard Hendrickson (1); Monte Hendrickson (1); Grace Jones (2); Dennis Krabbenhoft (2); Agnes Sieger (2).

ALTERNATES: Marian Maxwell; Charlotte Turner - Zila;

IMMEDIATE PAST PRESIDENT: Jennie Schmitt

SCIENTIFIC ADVISER: Dr. Daniel E. Stuntz

## Calendar

March 6 Saturday - last day to mail election ballots.

March 12 Friday - The 18th Annual Survivors Banquet will be held at South Seattle Community College, 6000 - 16th Ave. S.W., Seattle. This is the annual meeting of PSMS.

No Membership Meeting is held in March

March 22 Monday, Board Meeting, 7:30 The Monroe Center

March 26 Deadline for Spore Print Material. Send all items to the Editor, 2559 NE 96, Seattle, WA 98115.

March 27 Saturday only, Learning Field Trip to MacDonald County Park near Carnation.

April 3 & 4 Field Trip to Rockport, Steelhead Park

REMEMBER, the Survivors Banquet is our March meeting, and no membership meeting will be held at Monroe Center.

### TASTY RECIPE FROM THE TORONTO SOCIETY

1/4 - 1/2 lb. bacon, cut into cubes. Fry in an iron pan at moderate heat until most of the fat can be poured off.

Add 1 or 2 chopped onions, and 1 lb. of mushrooms (your favorite kind) and cook for 5 or 6 minutes.

Mix 1 cup milk with 1 - 2 tablespoons flour, stir well and add to above. Continue to stir until thickened.

Serve with mashed potatoes and pickled cucumbers, and you have a meal.

## Membership Meeting

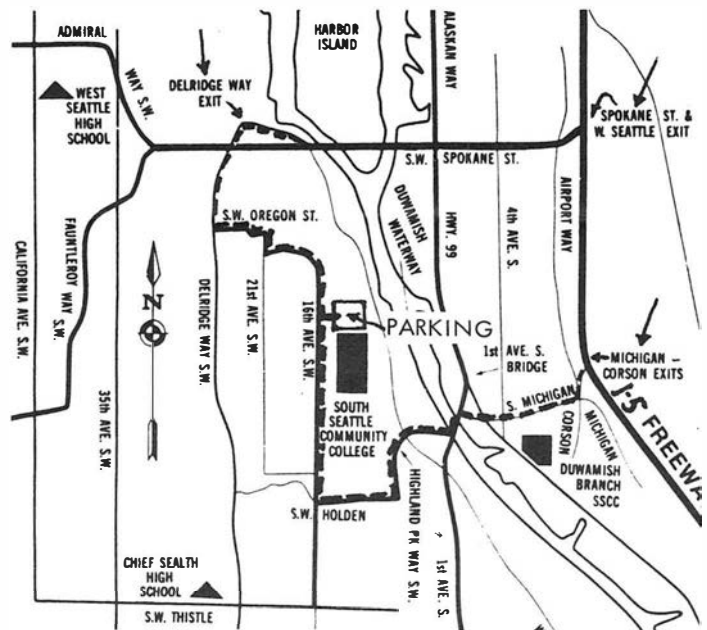
March 12th, the date for this year's Annual Meeting and 18th Survivors Banquet of our Society is fast approaching. We continue the tradition adopted by our founding fathers to celebrate the survival of a successful mushroom hunting season by holding a banquet. However, we do it in style. We again have chosen to hold it at South Seattle Community College, 6000 - 16th Ave. S.W., Seattle, where the students in the hotel and restaurant division under the direction of their teachers have served us gourmet meals in an elegant setting. The map and directions below will help you find the college. Park north of the campus and follow the signs to the dining area where a host will welcome you.

The Champagne Reception will be held at 6:30 pm. in the Rainier Room. You need not feel you must imbibe to join in the socializing. Dinner will be served at 7:30 pm. After dinner there will be a brief business meeting, announcing the results of the elections, which will be followed by a slide-presentation on the genus Ramaria by Kit Scates. Following the talk there will be a drawing for door prizes. The lovely floral arrangements, made by the students of the college, will be available at cost.

There are still some tickets available for the Banquet. To order your tickets, send your check (\$14.50 for the dinner; plus \$2 additional if you want to drink wine with your dinner; and an additional \$3.50 if you want the Champagne reception) and a stamped, self-addressed envelope to Ethel Bennett, 3023 NW 63rd, Seattle, WA 98107. Last day to order the banquet tickets is March 5, 1982.

I hope to see you all at the Banquet, March 12, 1982.

Mushroom donations are still needed! Donations of frozen chanterelles, dried boletes or morels are requested, so that they can be included in the menu. Call LomNee March at 885-0375 to arrange for pick-up.



The above map has been included to assist you in locating the College. Take Delridge Way Exit from Spokane Street OR Highland Parkway Exit from First Avenue South. The address of South Seattle Community College is 6000 - 16th Avenue Southwest. Ample parking is available on the north end of the Campus.

HOW TO KNOW THE GILLED MUSHROOMS, by Alexander H. Smith, Helen V. Smith, and Nancy S. Weber. Wm. C. Brown, Co., Dubuque, Iowa. 1979. vii + 334 p. 453 text figures. Price, \$9.95 reviewed by Dr. Daniel E. Stuntz in MYCOLOGIA, Vol. 73.

**How to Know the Gilled Mushrooms**, by Alexander H. Smith, Helen V. Smith, and Nancy S. Weber. Wm. C. Brown, Co., Dubuque, Iowa. 1979. vii + 334 p. 453 text figures. Price, \$9.95.

This is a companion volume to the previously published (1973) "How to Know the Non-Gilled Fleshy Fungi", which it resembles in format and presentation of contents. It is available bound in cloth, or with spiral binding and paper covers.

Although intended primarily for the mushroom hunter who is restricted to macroscopic features in identifying collections, it offers valuable information to the professional mycologist because of the inclusion of microscopical data in the presentation of each taxon. An introductory portion includes several pages of explanation of macroscopic and microscopical features of a mushroom, with excellent line drawings to illustrate the terms used. Following is a section on how to collect and examine specimens, one on "Mycophagy and Mycotoxins", and a list of 25 general references.

The main portion, p. 26-316, consists of a series of dichotomous keys to families, genera, species, and varieties of agarics. More than 800 species and varieties are included in 14 families. After a key to families, each family is presented with a key to its genera, and for each genus, a key to species and varieties. The key leads make use of macroscopic features only, but the brief description of each species or variety includes macroscopic and microscopical data and, for most species, an illustration. Several commonly collected genera (*Amanita*, *Cortinarius*, *Hygrophorus*, *Lactarius*, *Pholiota*, *inter alia*) are represented by 40 or more species each, a bonanza for the amateur, who seldom will find that much help in handbooks for identifying collec-

tions in those genera. An appendix, "Identifying Mushroom Genera by Macroscopic Characters", gives five "Special Keys" based on spore color, presence or absence of veils, and habit of the sporocarp. Finally, there is a unique feature; a combination glossary and index.

This book and its companion volume make available to the mushroom hunter a store of information well beyond that in any other North American handbook. The well known expertise and extensive experience of the authors give assurance of the reliability of the included data. The two volumes are a "must" for the amateur, and highly recommended for the professional mycologist interested in fleshy fungi.—D. E. STUNTZ

#### GRETE'S REVISED PICKLED MUSHROOM RECIPE

The following recipe was contributed to the 1981 NAMA Foray by the New Jersey Mycological Association

Place cleaned mushrooms in a saucepan: cover it with equal amounts of white vinegar and water. Bring to boil and allow to simmer for 5 - 10 minutes. Drain and discard liquid.

Prepare the pickling mixture from:

1/2 cup olive oil; 4 cloves of garlic; 2 teaspoons salt; 1 teaspoon oregano; 1 teaspoon dill weed; 1/2 teaspoon mace 1/8 teaspoon fresh-ground pepper.

Place mixture and mushrooms in jar and add enough water to cover mushrooms. For sourness, add vinegar to suit.

Mushrooms are ready for the table in one to two hours or can be stored in the refrigerator.

### CANDIDATES FOR ELECTED OFFICES FOR P.S.M.S., 1982

ELECTION INFORMATION: Remember that each individual membership is entitled to just one vote.

Each family membership is entitled to just two votes.

(P.S.M.S. By Laws, Article IV., Section 3).

#### FOR PRESIDENT



MILTON GROUT

My avocation is outdoor enthusiasm with a number of "OLOGIES," headed by mycology and mixed with a little boating and fishing. My vocation: retired, former executive in the fishing industry. President of PSMS in 1974 & 1975. Currently chairman of the education committee and instructor of the fall mushroom identification classes.

#### FOR TREASURER



FERRIS ANDERSON

Native of Seattle - born in Ballard, grew up in West Seattle, now living in Bellevue. Employed with Peoples National Bank for over 30 years; presently Vice President and Manager of the Ballard Office. PSMS member since 1975. Enjoy the field trips and fishing and traveling. Help on the Annual Exhibit. Now I want to add my financial expertise to my contributions to our Society.

### BELOW AND ON PAGE FOUR ARE THE CANDIDATES FOR THE BOARD OF TRUSTEES - VOTE FOR 5

An enthusiastic "Sherlock Holmes" (be it fair weather or foul) of the delicate treats of the forest. A welder by profession with time to enjoy my vegetable garden, camping and many pleasurable field trips with the Society. Joined in 1980 to learn all I can; Enjoy the company of others who love mushrooms and want to help newcomers to get a good start, and in other activities where my talents can help.



ERNIE BOA

As an ex-Seattle Police Officer I try to slow down my "Sherlock Holmes," but his enthusiasm captures all of us. I love all outdoor activities, but still have time to cook up a storm, sew, refinish old wood, etc. I love fascinating new experiences and the challenge of finding the delectable fungi. Since I have thoroughly enjoyed the Society, I want to get more involved and make PSMS as rewarding for all members as it has been for me.



JUDI BOA

BELOW ARE ADDITIONAL CANDIDATES FOR THE BOARD OF TRUSTEES - VOTE for a total of 5 -



ROBERT JUDD

Born in West Seattle; attended Fountleroy & Gatewood schools; graduated from West Seattle High. I am a former marine engineer, and have traveled to various parts of the world. I retired from the UW power plant. Hobbies include driftwood sculpture & rock hounding. With PSMS I enjoy the field trips and camping. I want to learn more about fungi. I am also a member of the Maplewood Gem & Mineral Club.



KEARNEY KOZAI

I have enjoyed being a member of PSMS for about 6 years. About all I have done so far is to assist as much as I can for the Annual Exhibit. Now I would like to do more (for whatever job the President will assign me) since I feel an organization is a two-way street; after you have received benefits, it's about time that you consider reciprocating. And that I am ready to do.

I have been a PSMS member for 4 years, have helped on each Annual Exhibit, am currently an Alternate on the Board, and the Historian of the Society. My participation in the activities of the Society have been enjoyable, and I am interested in staying involved in the management of PSMS. BS in Botany from the UW. Hobbies besides mushrooming include art, hiking and karate.

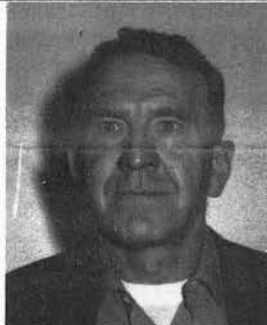


MARIAN MAXWELL

I am a news photographer for Komo TV; BA in Communications from Boston University. My spare time is devoted to mushrooms, post cards, and computers. I hope to serve as representative for the average member of our Society in the decision making. This will be a new experience in administration for me, and I look forward to the opportunity. Being only 32 years old, I still have lots of energy and enthusiasm to be used for the benefit of PSMS.



RICHARD PAULI



DON SCHULTZ

I am an avid outdoor person interested in everything out there in the forest. Incumbent Trustee and Co-Chairman of the 1981 Exhibit. Now that we have moved again, we will have to work extra hard to maintain the vigorous and healthy pace of the Society. By profession I am a teacher. I also like to travel. But I do want to stay involved in furthering the interests of PSMS.



RON SKOOR

Born in Seattle, attended Queen Anne High; Los Angeles City College. For over 40 years a Teamster, now retired. Elder and Church Treasurer for over 20 years. Professional Sports Official for 22 years. Enjoy camping and the out-of-doors, that is why I joined PSMS. Since retirement I would have more time to devote to PSMS. Also co-hosted a field trip last year, and found how much fun that is. I want to get more involved.

Born in Joliet, Montana, went to grade school in Laurel, Mo. Then I came to Washington and graduated from Wm. Winlock Miller High School in Olympia. Have four children and ten grandchildren. Hobbies are traveling and all kinds of crafts, in addition to camping & mushrooming. I am a volunteer coordinator for the Edmonds Senior Center. PSMS alternate Trustee in 1980. Want to stay involved.



AGNES SUIT

Have learned a lot about fungi since girl scout day camp at Seward Park and chasing the elusive morels on the day of Mt. St. Helens big eruption. I did anthropological and archeological research here and abroad. Currently an alternate PSMS Trustee. Have learned a lot in PSMS classes and on field trips. Helped on every Annual Exhibit. Now I want to continue to serve where I am needed.



CHARLOTTE TURNER-ZILA



CHARLES VOLZ

Retired Fishery Biologist, National Marine Fisheries Service. Member of the PSMS Founding Board and Charter Member #5. Have previously served as officer, including President in 1966. Chairman of the Identification Committee at the Annual Exhibit. Identifier on many PSMS field trips. Member of the P.N.W. Key Council and NAMA. Have taught mushroom identification classes in Edmonds and Lynnwood.

We remind you that these candidates are willing to donate a lot of their time, talent, and energy to keep our Society viable and vigorous. The least YOU can do is to VOTE for the candidates of YOUR CHOICE and mail in your VOTE in the addressed envelope.