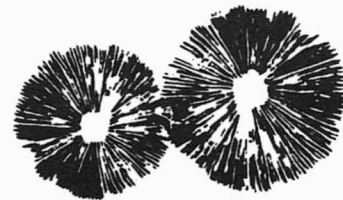


SPORE PRINTS



BULLETIN OF THE PUGET SOUND MYCOLOGICAL SOCIETY

Number 371

April 2001

IMPORTANT NEW FIELD TRIP CHANGES

Karin Mendell

In an effort to make life easier for our volunteer field trip hosts, this year we have made the following adjustments:

- **Fewer supplies will be required for hosting.** The number of containers has been reduced from three down to one. Please call Karin Mendell and make arrangements to pick up the "host kit" prior to the field trip you are hosting.
- **Coffee & breakfast treats will be provided.** Hosts will be asked to fill the two air-pump coffee containers (in the host kit) with coffee on the way to the field trip site. A third container may supply hot water for tea or cocoa. In addition, hosts may supply two dozen donuts or other sweet rolls. PSMS will reimburse for coffee & treats, with submitted receipts.
- **All members attending field trips are now requested to bring their own picnic supplies** (plates, eating utensils, and any other needed picnic supplies). We'd like to suggest washable, reusable items to reduce waste. This will greatly reduce the amount of organization needed to keep these supplies replenished continually throughout the field trip season.
- **Potluck Suggestion.** A last suggestion for all our vegetarian members. At several potlucks (traditionally held at the close of a field trip), many of our vegetarian members were disappointed by the lack of meatless entrées. Remember: The best way to ensure that a "meat-free" entrée is available is to bring one to share! Any and all shared dishes are welcome, and potlucks provide a nice opportunity for members to mingle and get acquainted while viewing all the mushrooms collected and identified that day.

It is hoped that these changes will make it so much easier to host that all of our members will volunteer and host a field trip during the spring or fall season. To volunteer for the Spring 2001 season, call Karin Mendell, (425) 868-7918. To volunteer for the Fall 2001 season, please call Cathy or Don Lennebacker, (425) 742-3163.

MEMBERS' E-MAIL LIST

The following instructions apply to the "members only" section of the PSMS Web site (psms.org):

To subscribe:

psms-members-subscribe@yahoogroups.com

To post a message:

psms-members@yahoogroups.com

For help:

cmeyer@helvella.org or (206) 722-6687.

HOW TO CHANGE YOUR PANTS IN THE WOODS

Old Farmer's Almanac, 2001, via Maggie Rogers

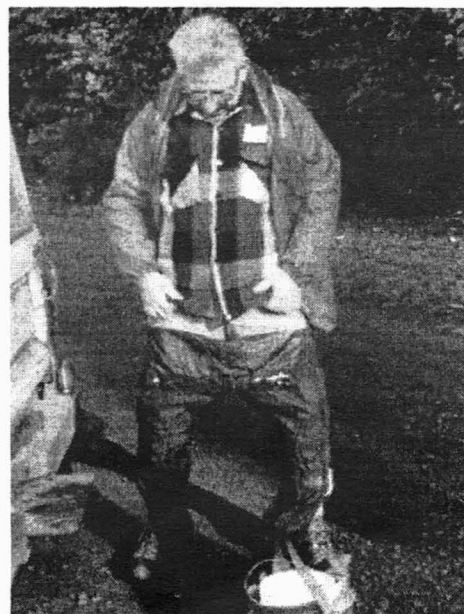
There are any number of respectable reasons for needing to change your pants outdoors. Maybe the weather has turned too cold for shorts. Maybe you accidentally sat in a puddle. Whatever the cause, though, there's a right way and a wrong way.

First the wrong way. Take off your shoes and remove your pants. (For the sake of clarity, we'll refer to this pair of pants as Pants A and the second pair as Pants B.) Throw Pants A to one side and put on Pants B one leg at a time, while attempting to keep your socks dry by hopping rapidly up and down on whichever foot is in contact with the damp ground. When Pants B are up around your waist, continue to hop in place while jamming a foot into one shoe. Step down on the newly shod foot and brush the leaves, grass, pebbles, and other debris from the sock on the unshod foot. Put on that shoe, remove the first, and shake out the debris. Put the first back on, tie both shoes, fasten your belt, and look up with a confident expression as if unaware that those around you have been fighting back laughter throughout the whole performance.

Here's the right way. Take off one shoe, then—while standing on the other, still-shod foot—withdraw that leg from the leg of Pants A. Insert it into the corresponding leg of Pants B, put your shoe back on, and calmly tie it. You are now wearing both shoes and have one leg in each of two different pairs of pants. This is a good time to pause for a moment, glance up at any onlookers, and savor the puzzled expressions on their faces.

Their puzzlement will turn to open admiration as you finish the sequence. Untie and remove your other shoe (that is, the shoe on the foot of the leg that's still within the leg of Pants A), slip out of the second half of Pants A, and step into the other half of Pants B. Pull Pants B up to your waist. If you've followed the procedure correctly, you'll now be standing on one shod foot with both legs fully enclosed in Pants B, having arrived at that point without ever setting a sock onto the ground. Now put on your second shoe, tie it, stand up, and take a bow.

*Right way or
wrong way?*



Spore Prints

is published monthly, September through June by the

PUGETSOUND MYCOLOGICAL SOCIETY

Center for Urban Horticulture, Box 354115
University of Washington, Seattle, Washington 98195
(206) 522-6031 <http://www.psms.org>

User name: morel Password: spring

OFFICERS: Joanne Young, President
Dick Sieger, Vice President
Lynn Phillips, Treasurer
Mary Beth Tyrholm, Secretary

TRUSTEES: Patrice Benson, D.V. Corey,
John Floberg, John Goldman,
Marcia Hiltzheimer, Fran Ikeda,
Brandon Matheny, Karin Mendell,
Colin Meyer, Bernice Velategui,
Doug Ward (Immed. Past Pres.)

ALTERNATES: Lorraine Dod

SCI. ADVISOR: Dr. Joseph F. Ammirati

EDITOR: Agnes A. Sieger, 271 Harmony Lane,
Port Angeles, WA 98362

Annual dues \$20; full-time students \$10

MEMBERSHIP MEETING

This month's speaker is Brandon Matheny, who will tell us about "Mushrooms from Hazel Wolf Wetland."

Brandon joined PSMS in 1995, developed an intense interest in mushrooms, and began a survey of the mushrooms in the Hazel Wolf Wetland near Issaquah. He is now a Ph.D. candidate at the University of Washington under Dr. Ammirati. He studies the genus *Inocybe* and teaches botany classes at the university.



BOARD NEWS, MARCH

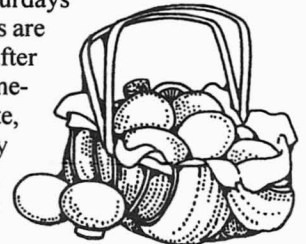
Agnes Sieger

Lynn Phillips passed around an account of PSMS finances as of the end of calendar year 2000. The finance committee decided that the current mix of investments is still good. Taylor Lockwood has agreed to do two shows a day at the annual exhibit next fall. Cathy and Don Lennebacker have agreed to coordinate hosts for the Fall 2001 field trips. There will be no field trip over Memorial Day weekend. Colin Meyer will handle registration of PSMS members for the Forest Service mushroom survey in the Lake Wenatchee area this spring. Colin reports that the microscopy class has filled up. John Goldman reports that the Forest Service will not require mushroom collecting permits this year and probably not next year. The board agreed it needs to formulate an official policy on mushroom permits. Mick Mueller of the U.S. Forest Service will be invited to speak to PSMS on the collecting policy of the Leavenworth/Wenatchee Forest Service district and write an article for *Spore Prints*.

FIELD TRIPS

Steve Curtice

Most field trips are planned for Saturdays and commence at 9:00 AM. Identifiers are usually available from 9 AM to 4 PM, after which time there is a potluck. Bring something to share as well as your own plate, eating utensils, and beverage. Sunday is optional for those who like to camp; there are no identifiers or hosts on Sundays.



For those intrepid and independent souls who feel like gambling on a chance to find acres of morels, Mike Lovelady found a Web site providing forest fire information and offers the following: The last fire season produced a large burn site at Summit Lake about six miles southeast of Oroville, WA. (See page 115 in DeLorme's *Washington Atlas and Gazetteer*.) It's a long drive, and you'll have to time it right.

April 28

Saint Edward Park
(Northeast shore of Lake Washington)

From I-5 take the 145th Street exit and go east on 145th to Lake City Way N.E. (Highway 522). Turn left and proceed around the north end of the lake to Kenmore and turn right onto Juanita Drive N.E. Drive just under two miles to the park entrance on the right. This is a beautiful and large park. Hosts will need to pick a place to gather and lay out some signs. Alissa Allen will host, and Colin Meyer will identify.

CALENDAR

- April 10 Membership meeting, 7:30 PM at CUH
- April 16 Board meeting, 7:30 PM, CUH Board Room
- April 17 *Spore Prints* deadline
- April 28 Field Trip, St. Edward County Park
- April 30 Intermediate Class for members who are registered

BOARD NEWS, FEBRUARY

Agnes Sieger

Bernice Velategui reports that membership renewals are keeping pace with last year's rate. Marcia Hiltzheimer and Patrice Benson will prepare 200 renewal reminders to be sent out as postcards. A microscopy workshop is scheduled at the end of March in Johnson Hall at the UW. Karin Mendell and Coleman Leuthy will co-chair the annual exhibit. Steven Curtice will co-chair field trip reservations. Karin Mendell will arrange field trip hosts this spring, but we will need a co-chair to organize hosts next fall. A discussion ensued on host responsibilities. John Goldman questioned our policy of restricting information on field trip sites to members only. It was decided to stick to the current policy. Dick Sieger reported that the *Spore Prints* deadline has been changed from Friday to Tuesday to allow time to send the master copy from Sequim to the printer in Seattle. Patrice Benson expressed the need for help with decorations, setup, and cleanup at the survivor's banquet. Mick Mueller of the U.S. Forest Service has a small grant to continue mushroom surveys of targeted habitats near Lake Wenatchee; he can accommodate about 20 members from PSMS. A finance committee consisting of Lynn Phillips, Joanne Young, John Goldman, and Karin Mendell was established to address the PSMS building fund and PSMS finances. John will also ask the Forest Service about possible requirements for mushroom collecting permits.

May 5

Bullfrog Flats

(Elev. 2000 ft., 80 miles east of Seattle)

Take I-90 over Snoqualmie Pass to exit #80. Go left at the stop sign and proceed about 500 ft. to the first right. Follow the PSMS signs. Karin Mendell and Luis Felix will be the hosts. Patrice Benson will identify.

May 12

Swauk Creek

(Elev. 2500 ft., 110 miles east of Seattle)

Take I-5 over Snoqualmie Pass to exit #85. Follow Hwy. 10 east of Cle Elum for 2½ miles. Turn left onto Hwy. 970. After 7 miles bear left onto US Hwy. 97 (north) and continue another 16 miles. The camp is on the right. Swauk Pass is 4 miles beyond the camp. Doug Ward will host.

May 19

Twenty-Nine Pines

(Elev. 2500 ft., 102 miles east of Seattle)

Take I-90 over Snoqualmie Pass to exit #85. Follow signs to Hwy. 970 east of Cle Elum for 2½ miles. Turn left on Hwy. 970 and go 4½ miles. Turn left onto Teanaway River Road. Continue about 6 miles to the Bible Rock Children's Camp. Bear right on the Teanaway North Fork Road and continue to Twenty-Nine Pines on the left, just past Jack Creek Road. There is no shelter. Russ Kurtz and Frances Ikeda will host. Brian Luther will identify

June 2-3

Bridge Creek

(Elev. 2400 ft., 150 miles east of Seattle)

Take Hwy. 2 over Stevens Pass and proceed 34 miles to Leavenworth. (You can also take I-90 over Snoqualmie Pass to exit #85, go over Swauk Pass via Hwy. 97 to Hwy. 2, and proceed left for six miles to Leavenworth.) Take Icicle Creek Road on the north-west end of town and go 6½ miles to Bridge Creek

Forest Camp. Don and Claire MacKenzie will host, and Brian Luther will identify. Brian will be setting up a field mycology lab with a generator and microscope or two and plans to provide microscopic demonstrations. This is a great opportunity for those interested in some of the finer points of identification.



LAKE WENATCHEE FUNGUS SURVEY

Colin Meyer

PSMS has again been invited by Mick Mueller to participate in the ongoing Lake Wenatchee Fungus Survey. This survey is a result of the Northwest Forest Plan and the Forest Ecosystem Management Assessment Team and can be read about at <http://mgd.nacse.org/fsl/survey/>.

Volunteers will collect fungi from specified locations, taking careful notes about the habitat and precise location. Collections will be brought back to the lodge, where they will be identified, cataloged, and preserved for an herbarium for future reference.

This will be an excellent opportunity to learn more about mushrooms and identification while contributing to an important scientific study. There will be the opportunity to meet members of the Pacific Northwest Key Council, who will also be attending.

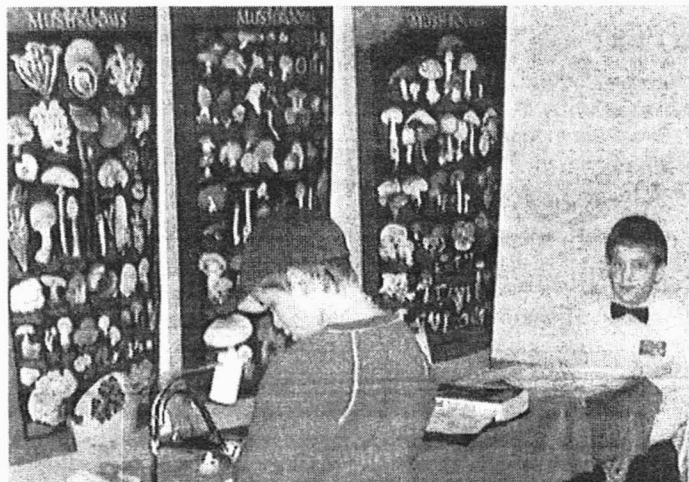
Participants will be staying at Tall Timbers Lodge, north of Highway 2 and west of Leavenworth. Space is limited to 20 people, and the cost will be \$21 which includes meals for the weekend. Please be aware that most of the expense is being paid by the Forest Service, and that this is a working weekend, not for pot hunting.

To register, e-mail Colin Meyer at cmeyer@helvella.org or phone (206) 722-6687.

MUSHROOM MISSIONARIES

Patrice Benson gave a talk and cooking demonstration at the Northwest Women's Show on Friday, March 23.

Joshua Birkebak and Doug Ward manned a mushroom booth at the Lake Forest Park science fair on Thursday, March 15.



Joshua Birkebak (right) watches an interested customer at the Lake Forest Park science fair

PORTOBELLA SANDWICH

CVMS Spore Print

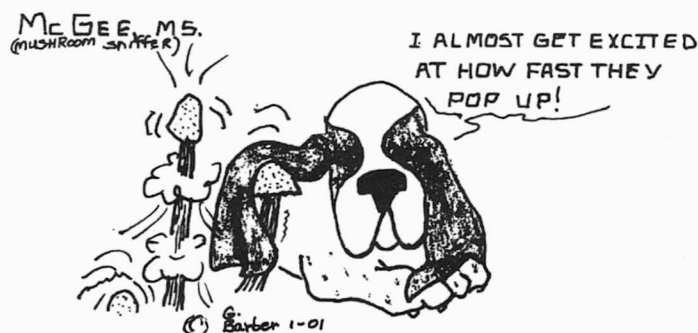
Winter 2001, via *NJMAnews*, March-April 2001

- 4 large 4½-in. Horse, Portobella, or Wine Cap mushrooms
- 1/3 cup olive oil
- Salt and pepper to taste
- 4 1-oz. slices mozzarella
- 1 cup low-fat plain yogurt
- ¼ cup roasted garlic, mashed
- ½ cup fresh basil
- 8 ½-in. slices Italian bread
- 14 oz. roasted red peppers

Clean mushrooms and remove stems. Brush caps on both sides liberally with olive oil and sprinkle gill side with salt and pepper. Grill, placing one slice of cheese on each cap for the last minute of grilling.

Puree in blender the yogurt, roasted garlic, and basil.

Grill bread slices and peppers. Spread yogurt mixture evenly on bread slices and top with peppers. Place grilled mushrooms on four of the bread slices and top with the remaining four. Serve.



TREASURER'S REPORT FOR 2000

INCOME

Banquet	2,050.00
Books	8,063.07
Cultivation	55.00
Donations	80.00
Dues	6,732.00
Education	1,290.00
Exhibit *	5,087.50
Field trip income	20.00
Foray	2,035.00
Scholarship fund	298.00
Misc. sales	126.50
T-shirts	-20.00
DivInc	78.43
IntInc	1,394.04
Uncategorized Income	50.50

TOTAL INCOME 27,340.04

EXPENSES

Annual exhibit	5,962.68
Bank charge	380.78
Banquet expense	2,025.00
Book sales expense	2,841.52
Cultivation expense	100.00
Education expense	1,018.77
Field trips	525.87
Flower show expense	16.00
Foray expense	1,558.79
Insurance	1,133.00
Library	239.46
Membership expense	919.28
NESC	-0.50
Monthly meeting	1,540.58

Office	159.42
President's discretionary fund	200.00
Roster expense	682.05
Spore Prints postage	1,353.06
Spore Prints printing	1,989.36
Student grant	1,000.00
Tax & License	96.00
Telephone	885.91
World Wide Web (Internet) Account	620.55
Uncategorized expenses	364.59
Building Fund	3,600.00
TOTAL EXPENSES	29,212.17

TOTAL INCOME - EXPENSES -1,872.13

*Exhibit income does not include book sales

PSMS ASSETS AS OF DECEMBER 31, 2000

ASSET BREAKDOWN

Cash and Bank Accounts	
Checking	4,451.74
Savings	<u>7,427.55</u>
Total	11,879.29
Other Assets	
Time Deposit	13,097.41
Treasury Note	<u>10,000.00</u>
Total	23,097.41
Investments, Building Fund	
Safeco Equity Fund	14,010.32
Total	<u>14,010.32</u>
TOTAL ASSETS	48,987.02

page 4



Puget Sound Mycological Society
Center for Urban Horticulture
Box 354115, University of Washington
Seattle, Washington 98195

RETURN SERVICE REQUESTED

Non-Profit Org. U.S. POSTAGE PAID SEATTLE, WA PERMIT NO. 6545
--

Brandon Matheny
3214 S. Byron St.
Seattle, Wa 98144

